



DISTRICT FOCUS: ARIZONA SCHOOL YEAR 2009–2010



MESA UNIFIED DISTRICT

<http://www.mpsaz.org/>

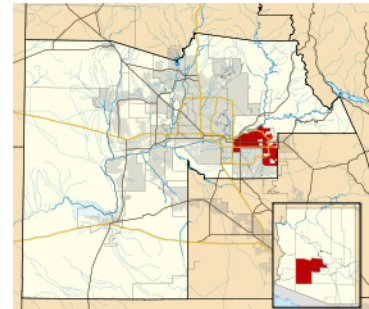
Superintendent: **Dr. Michael Cowen**
63 EAST MAIN STREET #101
MESA, AZ 85201

This district is:

- High Incidence
- High Growth
- Rural

DISTRICT STATISTICS

Year	Number of ELs	Proportion of ELs	Change since 99-00	Change since 04-05
1999-2000	4,128	5.7%	---	---
2004-2005	10,774	14.3%	+161.0%	---
2009-2010	6,024	8.9%	+45.9%	-44.1%



STATE STATISTICS

Year	Number of ELs	Proportion of ELs	Change since 99-00	Change since 04-05
1999-2000	125,301	14.7%	---	---
2004-2005	194,171	18.6%	+55.0%	---
2009-2010	83,625	7.8%	-33.3%	-56.9%

DID YOU KNOW?

- Mesa’s EL population consists of students from 54 different countries, speaking 41 different languages.
- *Education Week* magazine names Mesa Public Schools the No. 1 district for graduation rates among the nation's 50 largest districts.

All data are for preK-12 students; for more information go to http://www.ncela.gwu.edu/files/uploads/T3SIS_LEA/lea_overview.pdf
 Suggested Citation: National Clearinghouse for English Language Acquisition (2011). *Mesa Unified District. District Focus: Arizona, School Year 2009–10*. Washington, DC: Author. Available from http://www.ncela.gwu.edu/files/uploads/T3SIS_LEA/az_mesa.pdf
 NCELA is operated under contract ED-04-CO-0094/0002 from the US Department of Education to The George Washington University. The contents herein do not necessarily reflect the views or policies of the Department of Education nor does the mention of trade names, commercial products, or organizations imply endorsement by the US Government. Unless otherwise noted, readers are free to duplicate and use these materials in keeping with accepted publication standards. NCELA requests that proper credit be given in the event of reproduction.
www.ncela.gwu.edu Contact us at askncela@gwu.edu or 1 800 321 6223

