

**DISTRICT FOCUS: ARIZONA
SCHOOL YEAR 2009–2010**

**DYSART
UNIFIED SCHOOL DISTRICT**

<http://www.dysart.org/>

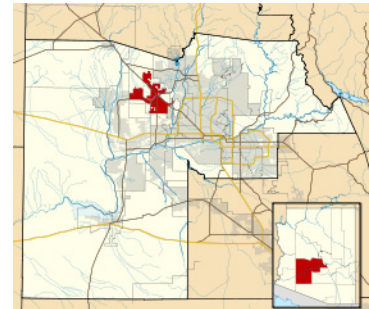
Superintendent: **Gail Pletnick, ED.D**
15802 NORTH PARKVIEW PLACE,
SURPRISE, AZ 85372

This district is:

- High Incidence
- High Growth
- Rural

DISTRICT STATISTICS

Year	Number of ELs	Proportion of ELs	Change since 99-00	Change since 04-05
1999-2000	1,409	30.6%	---	---
2004-2005	2,314	16.3%	+64.2%	---
2009-2010	924	3.8%	-34.4%	-60.1%



STATE STATISTICS

Year	Number of ELs	Proportion of ELs	Change since 99-00	Change since 04-05
1999-2000	125,301	14.7%	---	---
2004-2005	194,171	18.6%	+55.0%	---
2009-2010	83,625	7.8%	-33.3%	-56.9%

DID YOU KNOW?

- Dysart is the fastest growing school district in Arizona. In 2009–10 there were four times as many students as in 1999–2000. Despite this growth, the EL population has declined.
- 4 schools in Dysart are rated as “excelling” and 6 schools are rated as “highly performing” by the Arizona Department of Education.
- Dysart serves 24,000 students with 20 elementary, 1 alternative, and 3 high schools.

All data are for preK-12 students; for more information go to http://www.ncele.gwu.edu/files/uploads/T3SIS_LEA/lea_overview.pdf
Suggested Citation: National Clearinghouse for English Language Acquisition (2011). *Dysart Unified School District. District Focus: Arizona, School Year 2009–10*. Washington, DC: Author. Available from http://www.ncele.gwu.edu/files/uploads/T3SIS_LEA/az_dysart.pdf
NCELA is operated under contract ED-04-CO-0094/0002 from the US Department of Education to The George Washington University. The contents herein do not necessarily reflect the views or policies of the Department of Education nor does the mention of trade names, commercial products, or organizations imply endorsement by the US Government. Unless otherwise noted, readers are free to duplicate and use these materials in keeping with accepted publication standards. NCELA requests that proper credit be given in the event of reproduction.
www.ncele.gwu.edu Contact us at askncele@gwu.edu or 1 800 321 6223