

DISTRICT FOCUS: ARIZONA  
SCHOOL YEAR 2009–2010

**ALHAMBRA  
ELEMENTARY SCHOOL DISTRICT**

<http://www.alhambraesd.org/>

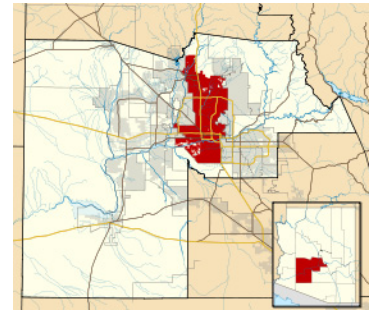
Superintendent: **Dr. Karen E. Williams**  
4510 NORTH 37TH AVENUE  
PHOENIX, AZ 85019

This district is:

- High Incidence
- High Growth
- Rural

**DISTRICT STATISTICS**

Year	Number of ELs	Proportion of ELs	Change since 99-00	Change since 04-05
1999-2000	5,326	40.7%	---	---
2004-2005	8,862	59.4%	+66.4%	---
2009-2010	4,562	31.5%	-14.3%	-48.5%



**STATE STATISTICS**

Year	Number of ELs	Proportion of ELs	Change since 99-00	Change since 04-05
1999-2000	125,301	14.7%	---	---
2004-2005	194,171	18.6%	+55.0%	---
2009-2010	83,625	7.8%	-33.3%	-56.9%

**DID YOU KNOW?**

- 30% of students in the district are English learners.
- All schools in Alhambra are performing, performing plus, highly performing, or excelling schools.
- Alhambra serves 14,000 students in preschool through 8<sup>th</sup> grade.

All data are for preK-12 students; for more information go to [http://www.ncele.gwu.edu/files/uploads/T3SIS\\_LEA/lea\\_overview.pdf](http://www.ncele.gwu.edu/files/uploads/T3SIS_LEA/lea_overview.pdf)  
Suggested Citation: National Clearinghouse for English Language Acquisition (2011). *Alhambra School District. District Focus: Arizona, School Year 2009–10*. Washington, DC: Author. Available from [http://www.ncele.gwu.edu/files/uploads/T3SIS\\_LEA/az\\_alhambra.pdf](http://www.ncele.gwu.edu/files/uploads/T3SIS_LEA/az_alhambra.pdf)  
NCELA is operated under contract ED-04-CO-0094/0002 from the US Department of Education to The George Washington University. The contents herein do not necessarily reflect the views or policies of the Department of Education nor does the mention of trade names, commercial products, or organizations imply endorsement by the US Government. Unless otherwise noted, readers are free to duplicate and use these materials in keeping with accepted publication standards. NCELA requests that proper credit be given in the event of reproduction.  
[www.ncele.gwu.edu](http://www.ncele.gwu.edu) Contact us at [askncela@gwu.edu](mailto:askncela@gwu.edu) or 1 800 321 6223