

GRAND VIEW SCHOOL

Cheryl Beaman

cbeaman@grandview.k12.ok.us

918-456-5131 X125



GRAND VIEW SCHOOL

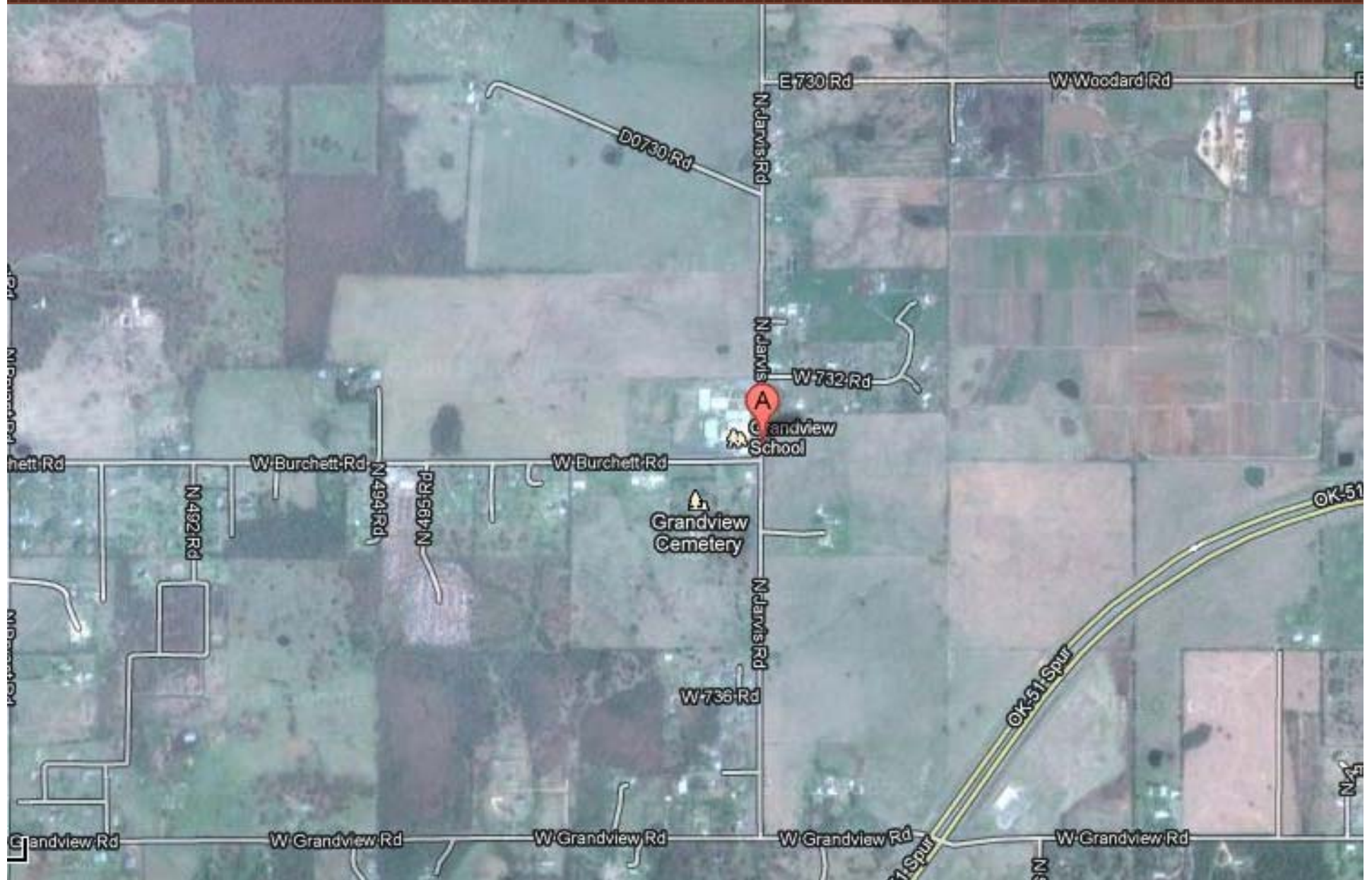
Parents as Teachers

GRAND VIEW SCHOOL

Located in the heart of
the Cherokee Nation in
Northeast Oklahoma.

The background of the text area features a large, semi-transparent seal of the Cherokee Nation. The seal is circular with a red border. Inside the border, the words "CHEROKEE NATION" are written at the top and "1838" at the bottom. The center of the seal depicts a landscape with a rising sun, a river, and a path leading towards the horizon. The entire graphic is set against a red background with a subtle pattern.

GRAND VIEW SCHOOL



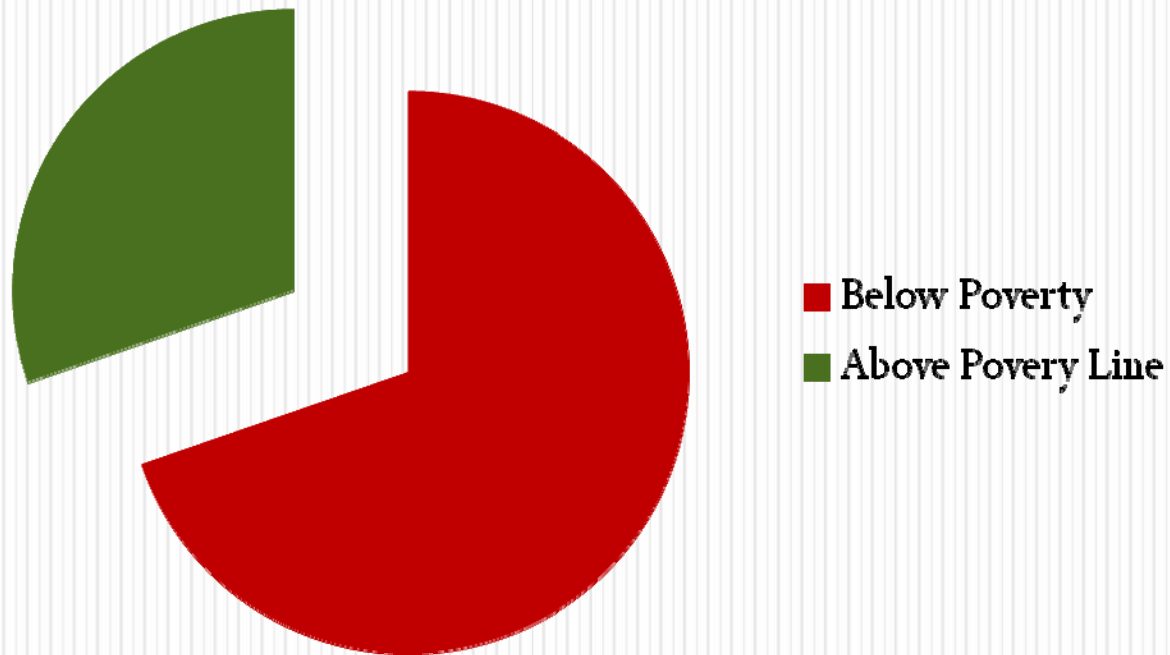
Our Students

76% Native American

81% Free & Reduced Lunches

DISTRICT STATISTICS

Families living in poverty



Adverse Childhood Experiences

Drug use, Physical Violence, Malnutrition, Parent incarcerated, Neglect, Mental Illness, Psychological and sexual abuse.

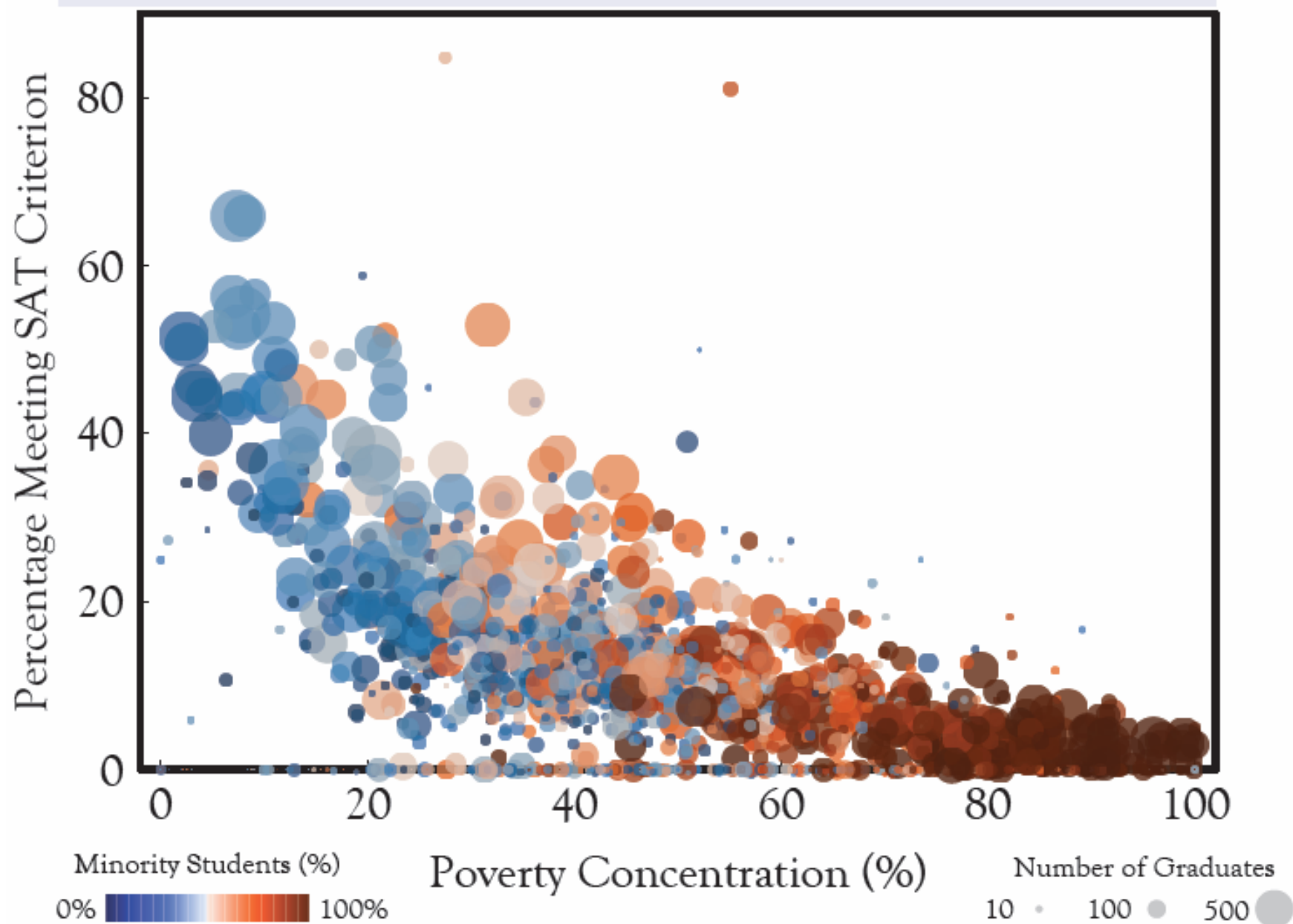
Cherokee County Ranks 64th in the State.

Oklahoma Ranks 43rd in the Nation.

Why does this matter?

- ❖ Poverty is the single best predictor of a child's failure to achieve in school.
- ❖ The achievement gap, between poor and non-poor children, begins early and persists.
- ❖ Cognitive scores of children of low-income families are likely to average 60% lower than those in the highest socioeconomic groups.

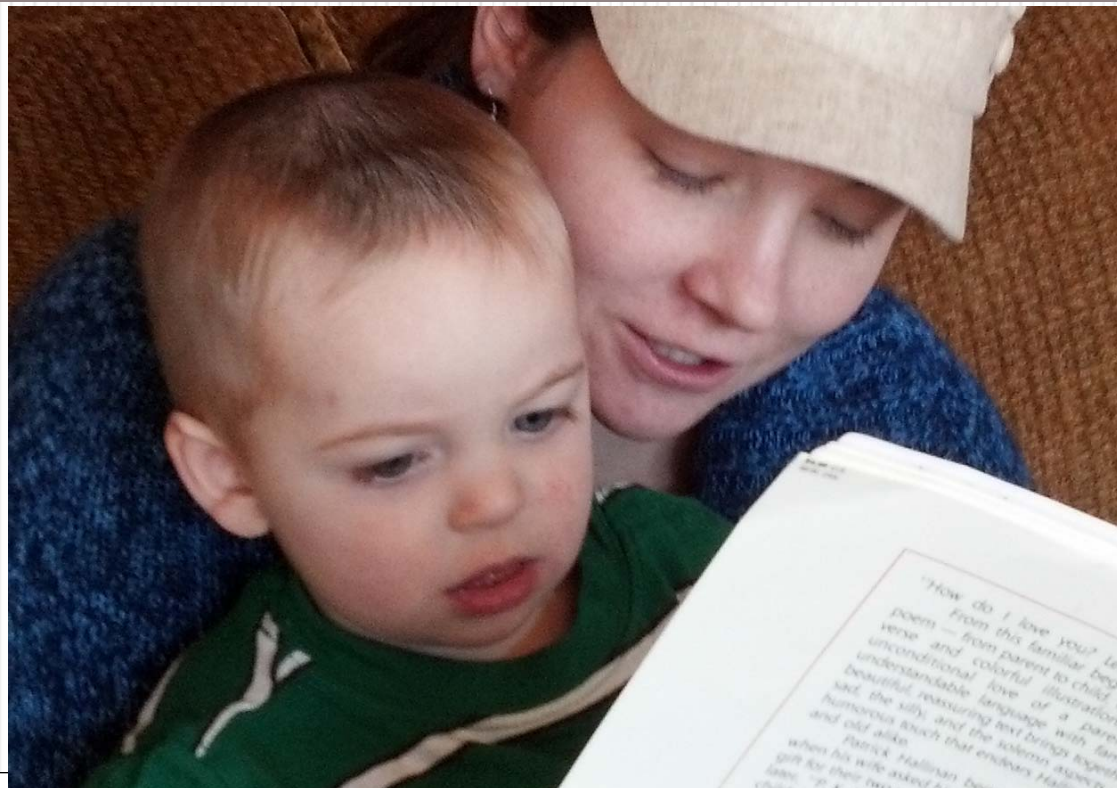
Texas Graduates Meeting SAT Criterion (2008)



Parents as Teachers

- ❖ Identify families with children from birth to 3 years old.
- ❖ Screen children for vision, hearing, learning disabilities and ELL status for early intervention.
- ❖ Work with parents to educate them on how to prepare their children for school.
- ❖ Identify resources within the community and help parents make contact with entities that can provide them services.

Identify families with children from birth to 3 years old.



Screen these children for vision, hearing, developmental delays and ELL

Children that experience vision or hearing loss are negatively impacted due to developmental delays. If a child misses the stimulation from birth to 4 years they enter school significantly behind their classmates.



Sensory stimulating activities.



Connecting parents within the community and connecting families to the school



Counseling Services



Reading Lab



Cherokee cultural activities



Pre-K children Cultural Crafts.



Cherokee Language Competitions



Seasonal Gatherings.



GRAND VIEW SCHOOL

Cheryl Beaman

cbeaman@grandview.k12.ok.us

918-456-5131 X125

