

# FLAP

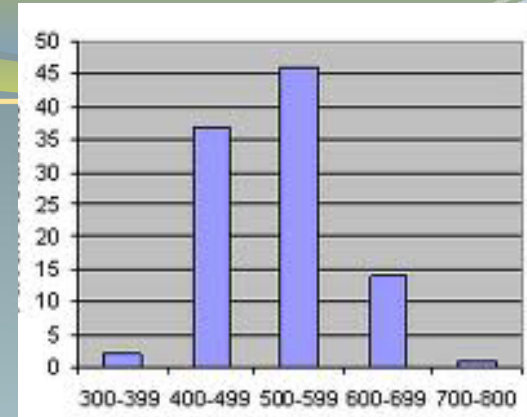
## Performance Reporting



**Cynthia Ryan**

**FLAP  
Roundtable**

# GPRA Measures



1. # of students in *critical language instruction*
2. Average # of *minutes of instruction* in critical languages
3. # of students *who meet* ambitious project objectives for foreign language proficiency

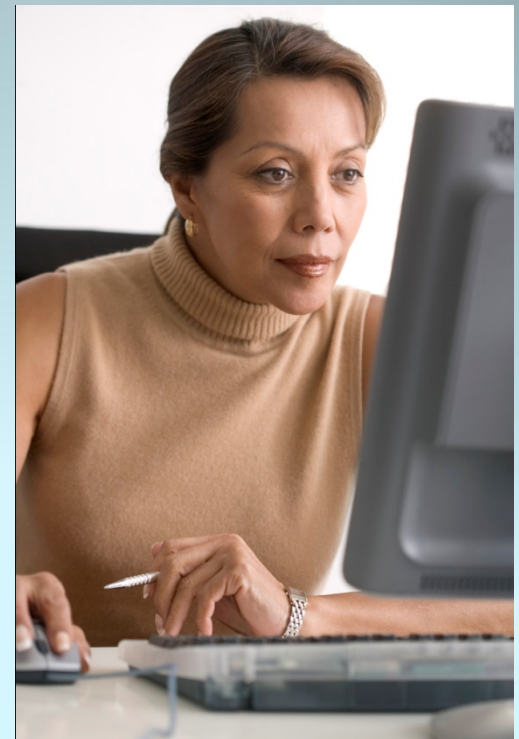
# **3 Types of Reports**

- 1. Annual Performance Report (APR)—Due each Spring**
- 2. Complete Data Report (CDR)— due after each budget period**
- 3. Final Performance — within 90 days after the end of the project period (including any period of no-cost extension)**

# Performance Report

## All Reports:

- Use *LEA Grant Performance Report Form*
- *Report on GPRA measures*



# Annual Performance

- **Projects expecting another year of continued funding**
- **Reports in mid-year, not an entire year of data, outcomes, and accomplishments**
- **Beginning of budget period to 30 days before report due**
- **Progress in meeting project objectives**
- **Explanation of progress**



# Annual Performance



- **Budget Expenditures**
- **GPRA Measure *targets* for current budget period--expected Performance**
- **Executive Summary—outcomes, activities**
- **Additional Information—project changes, issues**
- **Used to determine continuation funding**



# Complete Data



- Allows grantees to report a full year of data
- **Does Report: Actual GPRA Performance Data** for previous budget period
  - Quantitative Data and
  - Explanation of progress
- **Does NOT Report:**
  - Budget information
  - Information on project objectives
  - Executive Summary (grantees may)
  - Other information (grantees may)

# Final Performance

- ***Quantitative Data & Explanation of Data for***
  - ***Outcomes: final performance period-Section B***
  - ***GPRA measures of actual data for final performance period-Section A***
- ***Budget information for previous year & all years***
- ***Executive Summary for all budget years, total project period, most important outcomes & activities***
- ***Other information***
  - **For example, changes, problems, issues**



# Effective Reporting



## Will require:

- ✓ **Established objectives/targets for GPRA measures**
- ✓ **Measurable project objectives, supported by specific activities**



- **GPRA measures are designed to report annually, not multiple years or cumulative data**
- **Reports should be designed for multiple audiences**



- **Not every project will have data for all students each year**
  - **Projects may be in planning year, be developing assessments, or be developing targets**
- **Determining whether a project has made progress is based primarily on whether project is meeting its objectives**

# Challenges



- **Available assessments in critical languages aligned with project curriculum, instruction**
- **Aligned with ACTFL proficiency guidelines**
- **Projects serving multiple languages, grades**
- **How to develop targets that reflect multiple skills assessed**
- **Need for baseline data before established targets**

**QUESTIONS**

